

## Better performance, value, and functionality than QuickBooks® Enterprise Solutions 10.0

Sage Peachtree Quantum 2011 **offers significant performance and depth of functionality** when compared to other small business products on the market. Our proprietary technology, called SmartPosting, allows you to save transactions faster and complete more work in less time. Sage Peachtree Quantum also provides comprehensive reporting, business analytics, a fully-customizable dashboard, and workflow management tools, all backed by our US-based technical support and online training. It's fast, flexible, and works the way you do with proven strengths in inventory, analytics, and job profitability.

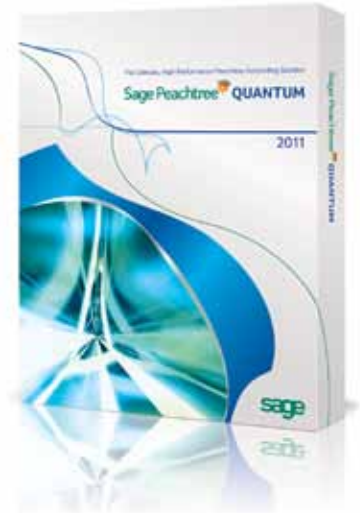
## Get the Best Value for Your Investment

Sage Peachtree Quantum provides you a total business management system that offers just the right amount of functionality at an affordable price range. Manage all aspects of your business, including accounting, customers, inventory, services, jobs, and employees—all in one centralized system. Plus, Sage Peachtree Quantum is designed to support the future growth of your business and can accommodate 5, 10, 15, 20, 30, or 40 licensed, named users.<sup>1</sup>

## Unparalleled Functionality and Performance

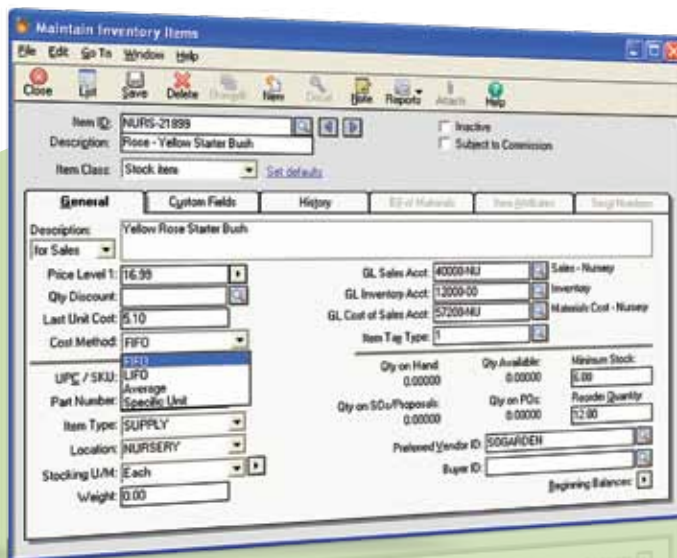
### Manage inventory costs better

The true cost of carrying inventory, such as storage, insurance, and taxes, can have a significant impact on your business's profitability. For product-based businesses, Sage Peachtree Quantum offers extensive inventory capabilities, such as **multi-level assemblies, serialized inventory, and work tickets**. Plus, it includes multiple costing methods for your inventory, including **LIFO, FIFO, average, and specific-unit costing**. Sage Peachtree Quantum can be set up to monitor inventory levels and automatically create a purchase order to replenish low inventory.



Sage Peachtree Quantum offers strengths over QuickBooks Enterprise Solutions 10.0 in the following areas:

- Inventory Management
- Jobs Management and Workflow
- Business Analytics and Reporting
- Role Based Security
- Internal Controls
- Cash Flow Management
- Customizable Dashboards
- Performance
- Support and Training
- Scalability from 5 to 40 users<sup>1</sup>
- Migration to Sage Mid-Market Solutions



### Track jobs start-to-finish from one location

Sage Peachtree Quantum includes comprehensive job costing functionality, including the ability to track **jobs, phases and cost codes**, as well as manage **change orders** and **approvals**.

Since every project is unique, Sage Peachtree Quantum offers various methods for **progress billing**, such as % completion, % contract, and % proposals. Construction-based businesses can track additional details, like **labor burden, retainage<sup>2</sup>**, and **subcontractor insurance**.

You will quickly get answers to job-related questions at the **Job and Project Management Center**, which provides all the information you need from one convenient, customizable screen.

Sage Peachtree Quantum makes managing service-based businesses easy, with functionality to track time & expense tickets and **streamline your service billing**. Create ad hoc reports on the fly using the **interactive jobs reporting** and output to Microsoft® Excel®, Adobe® PDF, or email. Many job reports can be customized to your needs, such as Retainage<sup>2</sup>, Job Profitability, Job Ledger details, or Work in Progress.

Phase ID	Cost Code ID	No. of Units	Expenses	Revenues
01-Design		6.00	250.00	500.00
02-Permits		1.00	75.00	0.00
03-Nursery	010-Labor	0.00	350.00	700.00
03-Nursery	020-Material	0.00	450.00	900.00
04-Ground Prep	030-Subcontract	10.00	650.00	910.00
04-Ground Prep	040-Equipment	2.00	720.00	936.00
06-Planting	020-Material	5.00	125.00	225.00
Totals:			2,620.00	

	Expenses	Revenues
Original estimates:	2,395.00	3,646.00
Total value of applied Change Orders	225.00	425.00
Current estimates:	2,620.00	4,071.00

Track each job in great detail. Keep everyone informed of the status of projects with visual indicators.

## Grow Your Business Smarter

Sage Peachtree Quantum offers helpful tools to optimize business processes, and position your business for improved profitability and sustainable growth.

### Quickly measure performance and identify challenges

Sage Peachtree Quantum has many tools to keep your management team and advisors focused on maintaining profitability and growth.

- **Cash Flow Manager** allows you to accurately forecast potential cash shortfalls or surpluses, sales trends, slow paying customers, and future financing needs.
- Maintain control of your financial data with **Internal Accounting Review<sup>3</sup>**, which checks for suspicious transactions and common accounting mistakes.
- Analyze your business performance or benchmark how you compare to similar companies in your industry with **Sage Peachtree Business Analytics<sup>4</sup>**.
- Unlimited reporting capabilities are available with **Crystal Reports® 2008**, included with Sage Peachtree Quantum.

### Ensure data integrity with Role-Based Security and “always on” audit trails

Sage Peachtree Quantum provides the ability to control user access with a high degree of precision.

**Role-based security** controls allow for screen-level and report groups access. Administrators can select from more than 100 specific areas to give Add, Edit, View-Only, or No Access rights to each user. You can even block access to key navigation screens.

## Customize workspace for fast access to key information

Sage Peachtree Quantum offers **customizable dashboards** to allow each Customer Service and Sales Representative to quickly find answers to customer questions about their account, a specific job, service, or inventory item.

Sage Peachtree Quantum is flexible and provides customizable fields so you can include your own unique **workflow processes, order statuses, and notifications**. Order Process Workflow provides for a collaborative solution that will keep everyone informed of what is assigned to each person, so that nothing gets dropped and everything stays on schedule. With **"My Dashboard,"** each user can build their own homepage to access only the information they need. Plus, you can manage multiple companies at one time for more efficient multi-tasking.

## Expand your functionality with Sage Connected Services

Sage Peachtree Quantum is fully compatible with all current online products and services associated with the Sage Peachtree product line, such as Sage Peachtree Online Banking<sup>5</sup>, Sage Payment Solutions<sup>6</sup>, Sage Peachtree Online Bill Pay<sup>7</sup>, Sage Peachtree Payroll Solutions<sup>8</sup>, and Sage Peachtree Online Backup<sup>9</sup>. Plus, ACT! Link for Sage Peachtree<sup>10</sup> is included with your software, so you'll have the details of your customers and vendors, like credit information, current balance, last invoice and payment, open quotes, sales orders, receipts, and more, right at your fingertips!

## Unlike Intuit, Sage offers solutions to support the life of your business

As your business grows, you can transition to a Sage enterprise-level solution to better suit your needs, so you never miss a beat. Intuit doesn't offer a more scalable solution than QuickBooks Enterprise Solutions 10.0, which means, eventually, you will be faced with the additional time and trouble associated with switching vendors and software.



- Create customizable, user-based dashboard views.
- Choose only the information you need to see for your job function.
- My Inbox shows each user their workflow assignments for efficient daily work management.
- Charts present at-a-glance view of information and allow for drill-down to the details.

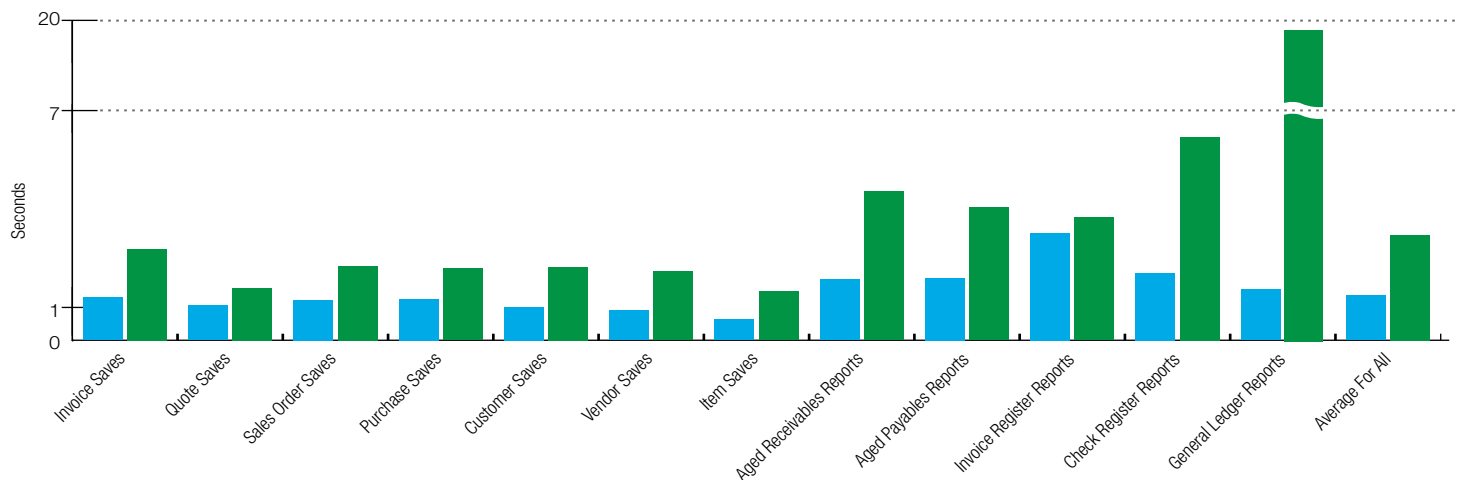
## Sage Peachtree Quantum 2011 is more than 2X faster than QuickBooks Enterprise Solutions 10.0!

SmartPosting yields increased performance in saving transactions and allows your data entry staff to complete more work in less time. Head-to-head performance testing shows the advantages this technology brings to Sage Peachtree Quantum 2011<sup>11</sup>.



**Transaction Breakdown—**  
shorter times indicate better performance

■ Sage Peachtree Quantum 2011 ■ QuickBooks Enterprise Solutions 2010



## Sage strives to deliver an Extraordinary Customer Experience

From unlimited<sup>12</sup> access to our US-based technical support, to available online training and a dedicated account manager, you'll feel secure in knowing that assistance is always close at hand.

We offer three, annual auto-renewing **Sage Peachtree Business Care Plans**<sup>13</sup> that give you:

- **The latest version of Sage Peachtree Quantum**, with upgrades and updates for as long as you're enrolled!
- **Unlimited<sup>12</sup> access to our highest level of Customer Support Analysts** via phone and email including Microsoft Excel support<sup>14</sup>.
- **The training tools you need**, with access to Anytime Learning courses available 24 hours a day, seven days a week, from any where you can access the Internet. In addition to Study Guides on CD and invitations to web-based training sessions.
- **A dedicated account manager** who knows your business needs and can provide relevant advice and answers to your questions.

Sage Peachtree Quantum is the best value for a business like yours, and is a must-have for **business owners seeking to keep performance at its highest level.**



1 Multi User licenses available in packs of 5, 10, 15, 20, 30 or 40. A maximum of 40 licensed, named users is allowed. Only the first 40 named users selected in the user maintenance screen are considered licensed, named users. 2 Retainage is available only in companies using accrual based accounting. 3 Sage is not liable or responsible for any fines or penalties that may result from errors in your company accounting records. The Internal Accounting Review is not intended to uncover all questionable transactions. 4 Internet access required. 5 Internet access required. Your bank may charge a fee to download statements. 6 Subject to approval and to Sage Payment Solutions terms and conditions. Additional fees, including swipe terminal for card present transactions, internet access, and credit card required. 7 Subject to approval and to Sage terms of service. Additional fees, internet access and checking account required. 8 Features and fees vary by solution. Compliant tax forms and tax tables require a subscription. Additional fees apply. Registration, authorized signature, valid email address, Internet access, and credit card required. May be subject to approval. Forms for PR and USVI are not supported. For details see [www.PeachtreePayroll.com](http://www.PeachtreePayroll.com) or call 877-231-3761. 9 Includes access to 100MB of storage space for one year from date of installation. Upgrade to next Sage Peachtree release required to continue free yearly service beyond initial term. Subject to third party terms and conditions. Internet access required. Terms, conditions, pricing, features and service options subject to change without notice. Windows Server 2003 and Terminal Services are not supported. 10 Internet access required. Must have a license for ACT! by Sage version 2008, 2009, or 2010. 11 Performance results are based on recommended system requirements for Sage Peachtree Quantum Accounting 2011, which satisfies the system requirements for QuickBooks Enterprise Solutions 10.0. Results may vary based on configuration, size and content of data file, system and network traffic. [Review details of the testing environment.](#) 12 Customer Support Analysts are available from 8:30 a.m. until 8:30 p.m. ET Monday-Friday, and reserve the right to limit calls to 1 hour or 1 incident. 13 The Sage Peachtree Business Care Plan (which includes product upgrades, updates, and customer support) will be renewed automatically each year on the anniversary date of your purchase unless you terminate your agreement prior to that date. Renewal is not required to continued access to product updates for supported versions. 14 Sage will assist with the management of Sage Peachtree data in Microsoft Excel 2002, 2003 and 2007.